

ALL MODES OF THE MAJOR SCALE IN EVERY KEY

This lesson is meant to be a reference for when a student needs to look up the correct mode or scale for a chord they are playing. In the previous exercises I have written out scales and fingerings for Ionian, Dorian, Lydian, Mixolydian and Aeolian scales. However we have not dealt with chords that use the Locrian and Phrygian scales yet. This exercise can be used to give you a summary of how these scales work, as well as which chords you would use to improvise over them. I will not be writing out fingerings but as always I will write out note names. I will also only be doing one octave.

C IONIAN


BEN PORTNER

C^{maj7}
C D E F G A B C



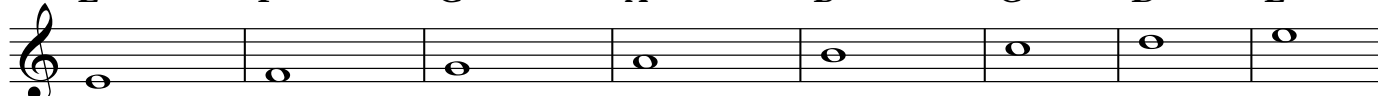
D DORIAN

D^{m7}
9 D E F G A B C D




E PHRYGIAN

E^(sus4b9)
17 E F G A B C D E



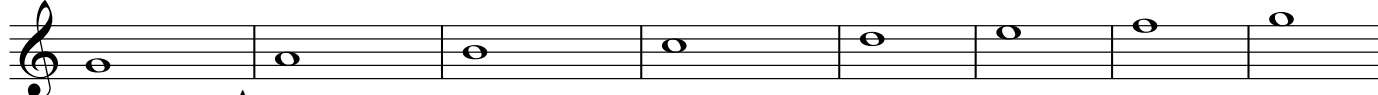
F LYDIAN

F^{maj7(#11)}
25 F G A B C D E F



G MIXOLYDIAN

G⁷
33 G A B C D E F G



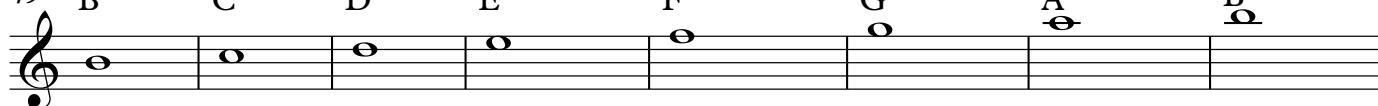
A AEOLIAN

A^m
41 A B C D E F G A



B LOCRIAN

B^{m7(b5)}
49 B C D E F G A B



BEN PORTNER

Db IONIAN

Dbmaj7

57 Db Eb F Gb Ab Bb C Db

Eb DORIAN

Ebm7

65 Eb F Gb Ab Bb C Db Eb

F PHYRIGIAN F(sus4b9)

73 F Gb Ab Bb C Db Eb F

Gb LYDIAN

Gbmaj7(#11)

81 Gb Ab Bb C Db Eb F Gb

Ab MIXOLYDIAN

Ab7

89 Ab Bb C Db Eb F Gb Ab

Bb AEOLIAN

Bbm

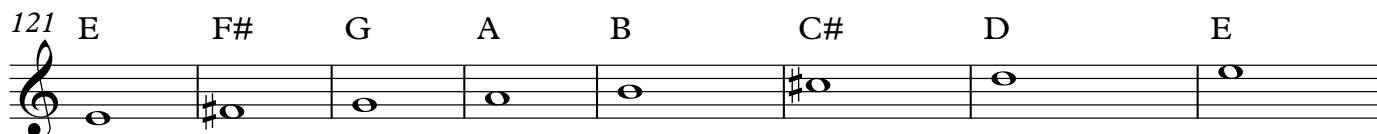
97 Bb C Db Eb F Gb Ab Bb

C LOCRIAN

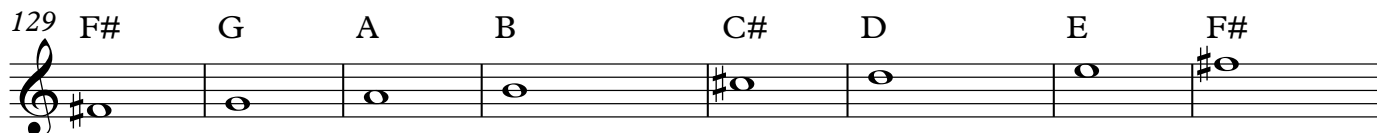
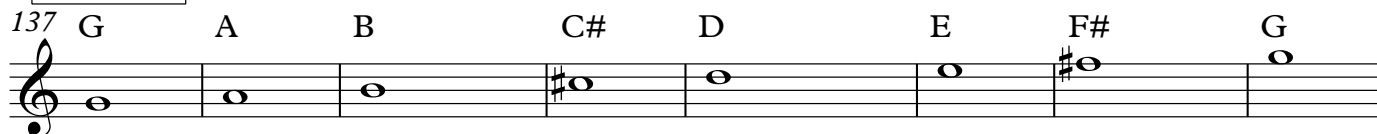
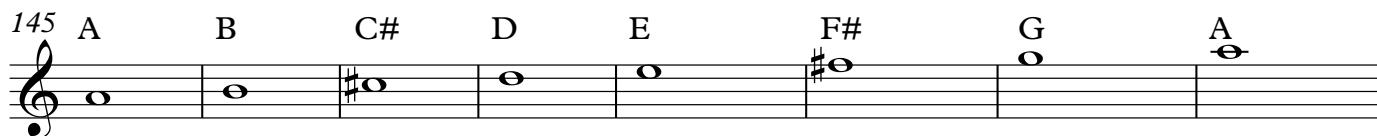
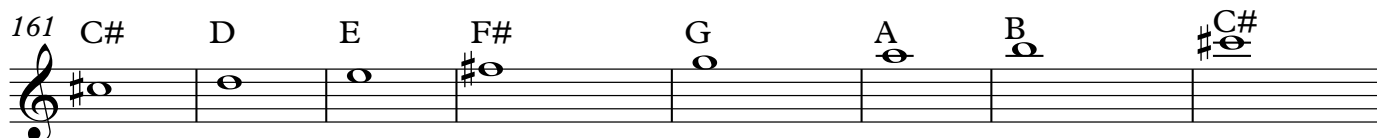
Cm7(b5)

105 C Db Eb F Gb Ab Bb C

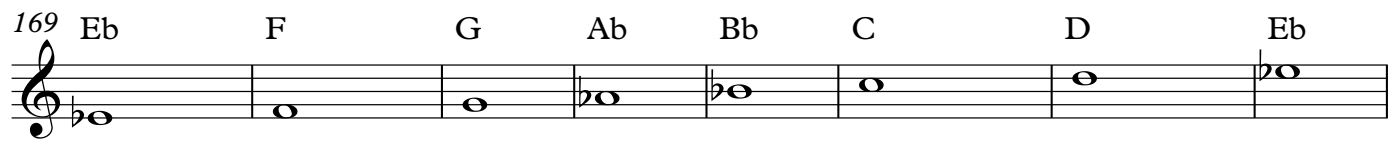
BEN PORTNER

D IONIAN D^{maj7}E DORIAN E^{m7}

F# PHYRGIAN F#(sus4b9)

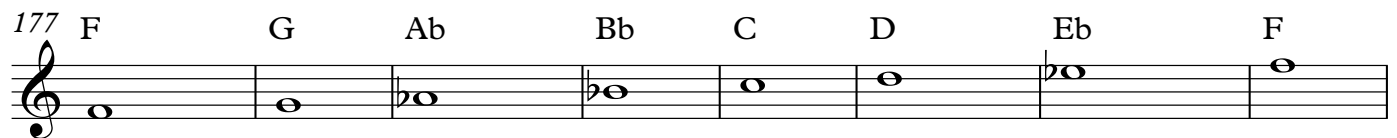
G LYDIAN G^{maj7(#11)}A MIXOLYDIAN A⁷B AEOLIAN B^mC# LOCRIAN C#^{m7(b5)}

E \flat IONIAN E \flat maj7



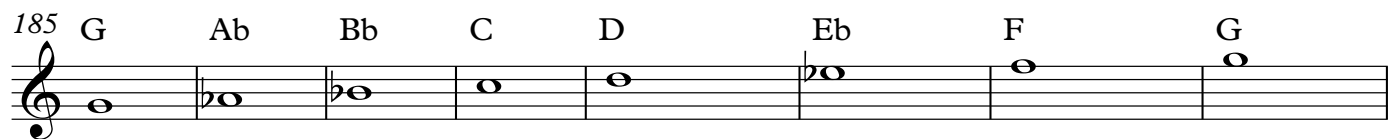
F DORIAN

Fm7

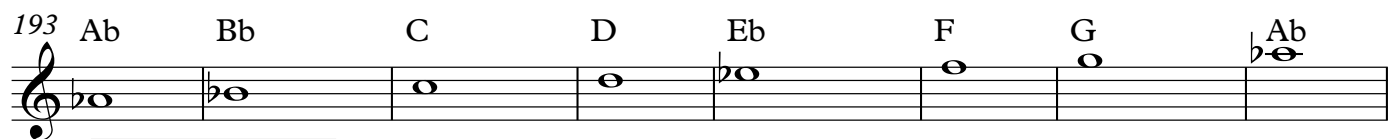


G PHYRGIAN

G(sus4 \flat 9)

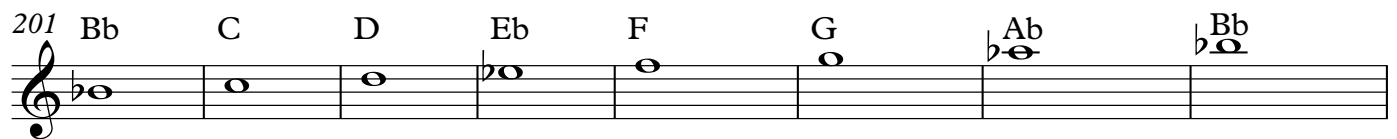


A \flat LYDIAN A \flat maj7(#11)



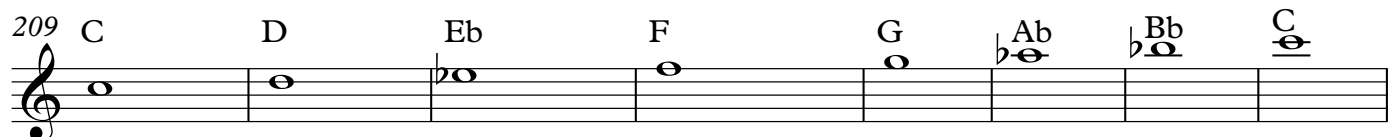
B \flat MIXOLYDIAN

B \flat 7



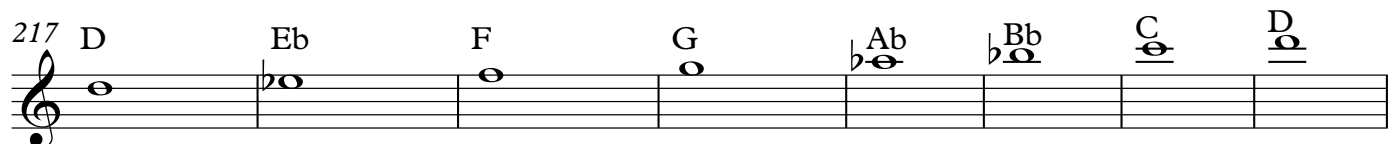
C AEOLIAN

Cm



D LOCRIAN

Dm7(\flat 5)



E IONIAN E^{maj7}

225 E F# G# A B C# D# E

F# DORIAN

F#^{m7}

233 F# G# A B C# D# E F#

G# PHYRIGIAN G#(sus4b9)

241 G# A B C# D# E F# G#

A LYDIAN

A^{maj7(#11)}

249 A B C# D# E F# G A

B MIXOLYDIAN

B⁷

257 B C# D# E F# G# A B

C# AEOLIAN

C#^m

265 C# D# E F# G# A B C#

D# LOCRIAN

D#^{m7(b5)}

273 D# E F# G# A B C# D#

F IONIAN Fmaj7

281 F G A Bb C D E F

G DORIAN Gm7

289 G A Bb C D E F G

A PHYRGIAN A(sus4b9)

297 A Bb C D E F G A

Bb LYDIAN Bbmaj7(#11)

305 Bb C D E F G A Bb

C MIXOLYDIAN C7

313 C D E F G A Bb C

D AEOLIAN Dm

321 D E F G A Bb C D

E LOCRIAN Em7(b5)

329 E F G A Bb C D E

BEN PORTNER

F# IONIAN F#maj7

337 F# G# A# B C# D# E#/F F#

G# DORIAN Ab G#m7 Ebm7

345 G# A# B C# D# E#/F F# G#

A# PHYRIGIAN A#(sus4b9)

353 A# B C# D# E#/F F# G# A#

B LYDIAN Bmaj7(#11)

361 B C# D# E#/F F# G# A# B

C# MIXOLYDIAN Db C#7 Db7

369 C# D# E#/F F# G# A# B C#

D# AEOLIAN (Eb) D#m Ebm

377 D# E#/F F# G# A# B C# D#

F LOCRIAN Fm7(b5)

385 F F# G# A# B C# D# F

G IONIAN Gmaj7

393 G A B C D E F# G

A DORIAN Am7

401 A B C D E F# G A

B PHRYGIAN B(sus4b9)

409 B C D E F# G A B

C LYDIAN Cmaj7(#11)

417 C D E F# G A B C

D MIXOLYDIAN D7

425 D E F# G A B C D

E AEOLIAN Em

433 E F# G A B C D E

F# LOCRIAN F#m7(b5)

441 F# G A B C D E F#

Ab IONIAN

Abmaj7

449 Ab Bb C Db Eb F G Ab

Bb DORIAN

Bbm7

457 Bb C Db Eb F G Ab Bb

C PHRYGIAN C(sus4b9)

465 C Db Eb F G Ab Bb C

Db LYDIAN Dbmaj7(#11)

473 Db Eb F G Ab Bb C Db

Eb MIXOLYDIAN Eb7

481 Eb F G Ab Bb C Db Eb

F AEOLIAN Fm

489 F G Ab Bb C Db Eb F

G LOCRIAN

Gm7(b5)

497 G Ab Bb C Db Eb F G

A IONIAN

A^{maj7}

505 A B C# D E F# G# A

B DORIAN

B^{m7}

513 B C# D E F# G# A B

C# PHRYGIAN

C#(sus4b9)

521 C# D E F# G# A B C#

D LYDIAN

D^{maj7(#11)}

529 D E F# G# A B C# D

E MIXOLYDIAN

E⁷

537 E F# G# A B C# D B E

F# AEOLIAN

545 F# G# A B C# D E F#

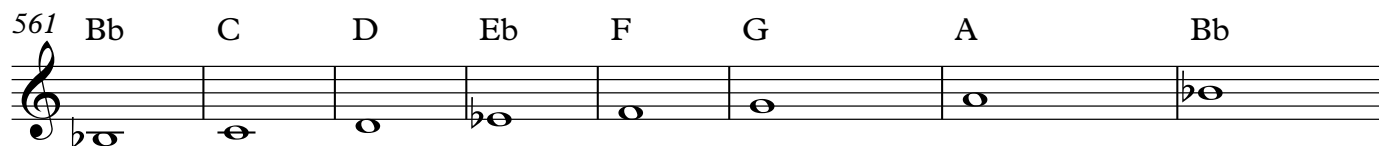
G# LOCRIAN

G#^{m7(b5)}

553 G# A B C# D E F# G#

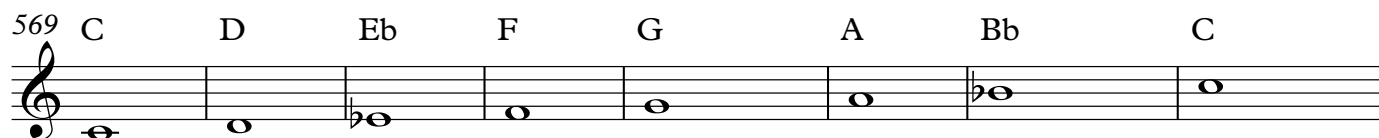
BEN PORTNER

Bb IONIAN

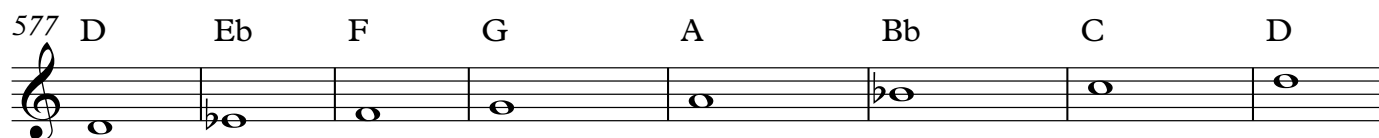
B \flat maj7

C DORIAN

Cm7



D PHRYGIAN

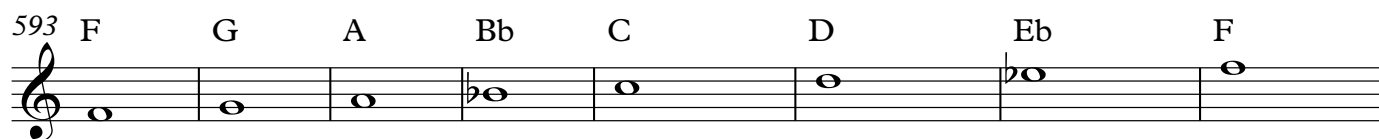
D(sus4 \flat 9)

Eb LYDIAN

E \flat maj7(#11)

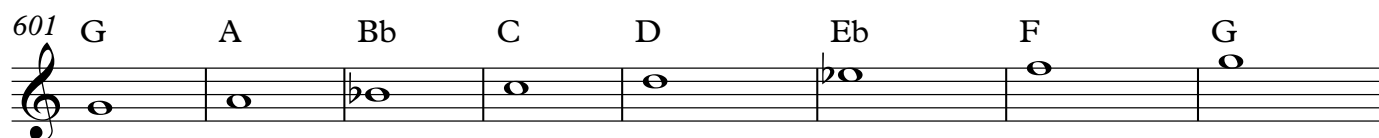
F MIXOLYDIAN

F7



G AEOLIAN

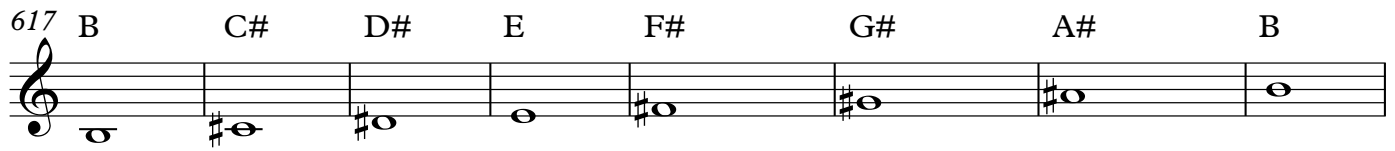
Gm



A LOCRIAN

A m 7(\flat 5)

B IONIAN Bmaj7



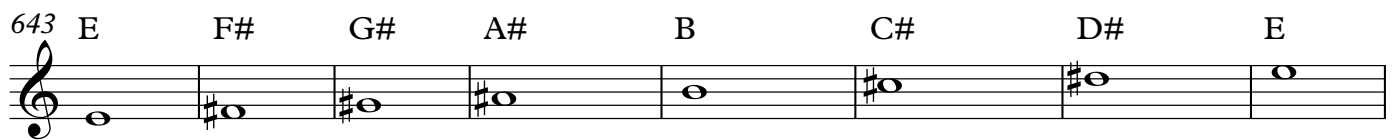
C# DORIAN C#m7



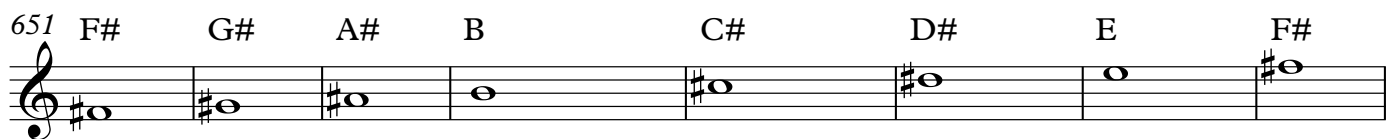
D# OR Eb PHYRGIAN



E LYDIAN Emaj7(#11)



F# MIXIOLYDIAN F#7



G# AEOLIAN (Ab) G#m



A# LYDIAN A#m7(b5)

