

HEXATONIC CHORDS

BEN PORTNER

When working over different scales one can use two different triads within the scale to create a "hexatonic" chord. Two triads equals six notes thus using the word hexatonic. We will go over different scales in every key and the hexatonic chords that can be used to improvise. Hexatonics are extremely efficient for improvising as usually they will outline certain tension of the chord. After learning these patterns it will be up to you to come up with your own permutations of these exercises to use in your improvisation.

C⁷ C and B^b Triads over c dominant 7

C E G C D F B^bD E G C E F B^bD F G C E G B^bD F B^b C E G C

5 C G E C B F D B^b G E C G F D B^bF E C G E D B^bF D C G E C

C[#]7 C[#] and B Triads over C[#] dominant 7th

10 C[#]E[#]G[#]C[#] D[#] F[#]B D[#] E[#]G[#]C[#]E[#] F[#]B D[#]F[#] G[#]C[#]E[#]G[#]B D[#]F[#]B

13 C[#]E[#]G[#] C[#] C[#]G[#]E[#] C[#]B F[#]D[#]B G[#]E[#]C[#]G[#]F[#]D[#]B F[#]

16 E[#]C[#]G[#] E[#]D[#]B F[#]D[#] C[#] G[#]E[#]C[#]

D⁷ D and C Triads over D dominant 7th

19 D F[#]A D E G C E F[#]A D F[#]G C E G A D F[#]A C E G C D F[#]A D

2

23 D A F#D C G E C A F#D A G E C G F#D A F# E C G E D A F#D

E_b7 Eb and Db Triads over Eb dominant 7th

28 Eb G Bb Eb F Ab Db F G Bb Eb G Ab Db F Ab Bb Eb G Bb Db F Ab Db Eb G Bb Eb

32 Eb Bb G Eb Db Ab F Db Bb G Eb Bb Ab F Db Ab G Eb Bb G F Db Ab F Eb Bb G Eb

E⁷ E and D Triads over E dominant 7th

36 E G#B E F#A D F# G#B E G#A D F#A B E G#B D F#A D E G#B E

40 E B G# E D A F#D B G#E B A F#D A G#E B G# F#D A F# E B G#E

F⁷ F and Eb Triads over F dominant 7th

44 F A C F G BbEbG A C A A BbEbG Bb C F A C EbG BbEb F A C F

48 F C A F EbBbG Eb C A F C BbG Eb Bb A F C A G EbBbG F C A F

G_b7 G_b and E Triads over G_b dominant 7th

53 Gb Bb Db Gb Ab Cb Fb Ab Bb Db Gb Bb Cb Fb Ab Cb Db Gb Bb Db Fb Ab Cb Fb

56 Gb Bb Db Gb Gb Db Bb Gb Fb Cb Ab Fb Db Bb Gb Db Cb Abb Fb Cb

59 Bb Gb Db Bb Ab Fb Cb Ab Gb Db Bb Gb

G⁷ G and F Triads over G dominant 7th

61 G B D G A C F A B D G B C F A C D G B D F A C F G B D G

65 G D B G F C A F D B G D C A F C B G D B A F C A G D B G

Ab⁷ Ab and Gb Triads over Ab dominant 7th

70 Ab C Eb Ab Bb Db Gb Bb C Eb Ab C Db Gb Bb Db Eb Ab C Eb Gb Bb Db Gb

73 Ab C Eb Ab Ab Eb C Ab Gb Db Bb Gb Eb C Ab Eb Db Bb Gb Db

76 C Ab Eb C Bb Gb Db Bb Ab Eb C Ab

A⁷ A and G Triads over A dominant 7th

79 A C#E A B D G B C#E A C#D G B D E A C#E G B D G A C#E A

83 A E C# A G D B D E C# A E D B G D C# A E C# B G D B A E C# A

B^b7 Bb and Ab Triads over Bb dominant 7th

88 B^bD F B^bC E^bA^bC D F B^bD E^bA^bC E^b F B^bD F A^bC E^bA^b B^bD F B^b

92 B^bF D B^bA^bE^bC A^bF D B^bF E^bC A^bE^bD B^bF D C A^bE^bC B^bF D B^b

B⁷ B and A Triads over B dominant 7th

97 B^bD#F#B C#E A C# D#F#B D#E A C#E F#B D#F#A C#E A B D#F#B

101 B F#D#B A E C#A F#D#B F#E C#A E D#B F#D# C#A E C#B F#D#B

105

Now we're going to impose the major and dominant chords using the # 11. In the key of C major this would be the C and D triads. We will do this in every key.

BEN PORTNER

C and D triads over major 7th # 11

Cmaj7(#11)

115 C E G C D F# A D E G C E F# A D F# G C E G A D F# A C E G C C G E C

119 A F# D A G E C G F# D A F# E C G E D A F# D C G E C

Db and Eb triads over Db major 7th # 11

Dbmaj7(#11)

125 Db F Ab Db Eb G Bb Eb F Ab Db F G Bb Eb G Ab Db F Ab Bb Eb G Bb

128 Db F Ab Db Db Ab F Db Bb G Eb Bb Ab F Db Ab G Eb Bb G F Db Ab F

131 Eb Bb G Eb Db Ab F Db

D and E triads over D major 7 #11

Dmaj7(#11)

135 D F# A D E G# B E F# A D F# G# B E G# A D F# A B E G# B D F# A D D A F# D

139 B G#E B A F#D A G#E B G#F# D A F# E B G#E D A F#D

E_bmaj7(#11) Eb and F triads over Eb major 7 #11

143 Eb G Bb Eb F A C F G Bb Eb G A C F C Bb Eb G Bb C F A C Eb G Bb Eb Eb Bb Eb

147 C A F C Bb G Eb Bb A F C A G Eb Bb G F C A F Eb Bb G Eb

E_mmaj7(#11) E and F# major triads over major 7 #11

153 E G#B E F#A#C# F# G#B E G#A#C#F#A# B E G#B C#F#A#C#

156 E G#B E E B G#E C#A#F#C# B G#E B A#F#C# A#G#E B G#

159 F#C#A# F#E B G#E

F_mmaj7(#11) F and G major triads over F major 7 #11

163 F A C F G B D G A C F A B D G B C F A C D G B D F A C F F C A F

167 D B G D C A F C B G D B A F C A G D B G F C A F

G \flat maj7(#11)

G \flat and A \flat major triads over G \flat major 7 #11

173 G \flat B \flat D \flat G \flat A \flat C E \flat A \flat B \flat D \flat G \flat B \flat C E \flat A \flat C D \flat G \flat B \flat D \flat E \flat A \flat C E \flat

176 G \flat B \flat D \flat G \flat G \flat D \flat B \flat G \flat E \flat C A \flat E \flat D \flat B \flat G \flat D \flat C A \flat E \flat C B \flat G \flat D \flat B \flat

179 A \flat E \flat C A \flat G \flat D \flat B \flat G \flat

Gmaj7(#11)

G and A major triads over G major 7 #11

183 G B D G A C# E A B D G B C# E A C# D G B D E A C# E G B D G G D B G

187 E C# A E D B G D C# A E C# B G D B A E C# A G D B G

A \flat maj7(#11)

A \flat and B \flat major triads over A \flat major 7 #11

193 A \flat C E \flat A \flat B \flat D F B \flat C E \flat A \flat C D F B \flat D E \flat A \flat C E \flat F B \flat D F A \flat C E \flat A \flat A \flat E \flat C A \flat

197 F D B \flat F E \flat C A \flat E \flat D B \flat F D C A \flat E \flat C B \flat F D B \flat A \flat E \flat C A \flat

A^{maj7}(#11)

A and B major triads over A major 7 #11

203 A C#E A B D#F# B C#E A C#D#F# B D# E A C#E F#B D#F#

206 A C#E A A E C#A F#D#B F#E C#A E D#B F# D#C#A E C#

209 B F#D# B A E C#A

B^bmaj7(#11)

B^b and C major triads over B^b major 7 # 11

213 B^bDF B^bCE G C D F B^bDE G C E F B^bDF G C E G B^bDF B^bB^bFD B^b

217 G E C G F D B^bF E C G E D B^bFD C G E C B^bFD B^b

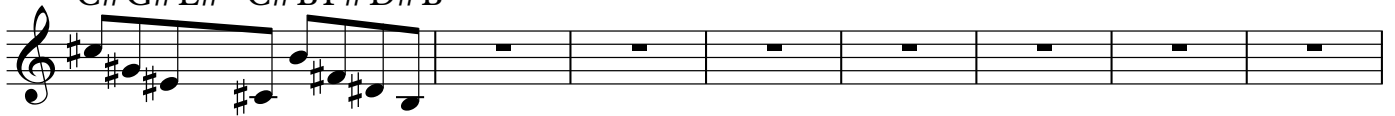
B^{maj7}(#11)

B and C# major triads over B major 7 #11

223 B D#F#B C# E# G#C# D#F#B D#E#G#C# E# F#B D#F#G#C#E#G#

226 B D#F#B B F#D# B G#E# C# G#F#D#B F# E#C#G#E#D#B#D#

229 C#G#E# C#BF#D#B



Now we are going to work on the tritone substitution. Each triad will be a tritone away from one another

C7(#11)

C and F# triads over a C7b9#11 chord

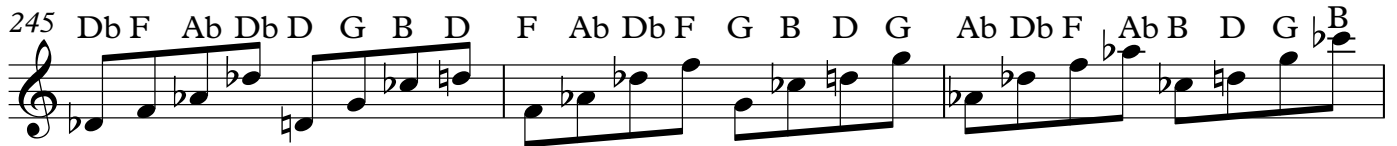


241 BbF#C# BbGECG F#C#Bb F#ECGE C#BbF# C#CGEC

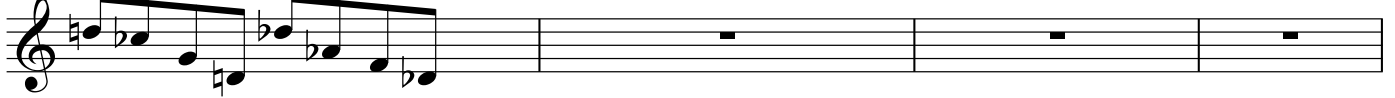


Db7(#11)

Db and G triads Db 7 b9#11

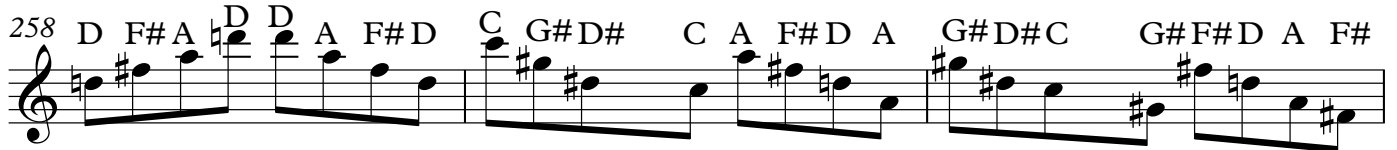


251 D B G D DbAbF Db

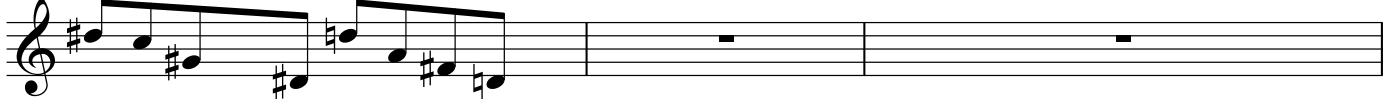


D7(#11)

D and G# triads over D7 #11 b9



261 D#C G# D#D A F#D



Eb7(#11)

Eb and A triads over Eb 7 #11 b9



268 Db AE Db DbGEb Bb A E Db AGEbBbG E Db AE EbBbG Eb



E7(#11)

E and Bb triads over E7 #11b9

273 E G#B E E#A#D E# G#B E G#A#D E# A# B E G#B D E# A# D

276 E G#B E E B G#E D A#E#D B G#E B A#E#D A#G# E B G#

279 E#D A#E#E B G#E

F7(#11)

F and B triads over F7 # 11 b9

283 F A C F F#B EbF# A C F A B EbF#B C F A C EbF#BEb F A C F F C A F

287 EbB F#Eb C A F C B F#EbBAF C A F#EbBF#F C A F

Gb7(#11)

Gb and C triads over Gb 7 #11 b9

292 GbBbDb GbG C E G BbDbGb BbC E G C DbGbBb DbE G C E

295 Gb Bb Db Gb Gb Db Bb Gb E C G E Db Bb Gb Db C G E C Bb Gb Db Bb

298 G E C G Gb Db Bb Gb

G and C# triads over G7#11b9

G7(#11)

302 G B D G G#C#F G# B D G B C#F G# C# D G B D F G#C# F

305 G B D G G D B G F C#G# F D B G D C#G#F C#B G D B G#F C#G#G D B B

Ab and D triads over Ab 7 #11 b 9

Ab7(#11)

309 Ab C Eb Ab A D Gb A C Eb Ab C D Gb A D Eb Ab C Eb Gb A D Gb Ab C Eb Ab Ab Eb Ab

313 Gb D A Gb Eb C Ab Eb D A Gb DC Ab Eb C A Gb D A Ab Eb C Ab

A7(#11)

A and D# triads over A7 #11b9

318 A C#E A A#D#G A# C#E A C#D# G A# D# E A C#E G A#D#G

321 A C#E A A E C#A G D#A# G E C#A E D#A# G D#C#A E C#

324 A#G D#A# A E C#A

Bb7(#11)

Bb and E triads over Bb7 #11 b9

328 BbDF BbB E AbB D F BbDE AbB E F BbDF AbB E Ab BbDF BbBbFD Bb

332 AbEB AbFD BbF E B AbED BbFD B AbEB BbFD Bb

B7(#11)

338 B D#F#B C F A C D#F#B D#F A C F F#B D#F#A C F A

341 B D#F# B B F#D# A F C A F#D#B F# F C A F D#B F#D#C A F C B F#D#B

Now we will work on the diminished major 7th chord. This chord can be made by taking one triad and combining it with a triad that is a half step below it. Practice in every key.

Cmaj7

C and B triads over C dim major 7

345 C E G C EbF#BEb E G C E F#B EbF# G C E G B EbF#B C E G C C G E C

349 B F#EbBGE C G F#EbBF#ECGE EbBF#EbCGEC

Db and C triads over Db dim maj 7

Db^bomaj7

355 Db F Ab Db E G C E F Ab Db F G C E G Ab Db F Ab C E G C Db F Ab Db Db Ab F Db

359 C G E C Ab F Db Ab G E C G F Db Ab F E C G E Db Ab F Db

D^omaj7

D and C# triads over d diminished major 7th

365 D F# A D F G# C# F F# A D F# G# C# F G# A D F# A C# F G# C#

368 D F# A D D A F# D C# G# F C# A F# D A

370 G# F C# G# F# D A F# F C# G# F D A F# D

Eb and D triads over Eb dim major 7

Eb^bomaj7

375 Eb G Bb Eb Gb A D Gb G Bb Eb G A D Gb A Bb Eb G Bb D Gb A D Eb G Bb Eb Eb G Eb

379 D A G^b B^b G E^b B^b A G^b D A G E^b B^b G G^b D A G^b E^b B^b E^b G

E and D# triads over E diminished major 7th

E^omaj7

385 E G#B E G A#D#G G#B E G#A#D# G A# B E G#B D#G A#D#

388 E G#B E E B G#E D# A#G D#B G#E B A#G D#A#G#E B G#

391 G D#A#GE B G#E

F and E triads over F diminished major 7th

F^omaj7

395 F A C F A^bB E A^b A C F A B E A^bB C F A C E A^bB E F A C F F C A F

399 E B A^bE C A F C B A^bE B A F C A A^bE B A^bF C A F

A and G# major triads over A diminished major 7th

A^omaj7

BEN PORTNER

433 A C#E A C D#G# C C#E A C#D#G# C D# E A C#E G#C D#G#

436 A C#E A E C#A G#D# C G#E C#A E D#C G#D# C#A E C# C G#D# C A E C# A

Bb and A major triads over Bb diminished major 7th

B^bo^{maj}7

440 Bb D F Bb Db E A Db D F Bb D E A Db E F Bb D F A Db E A Bb D F Bb Bb F D Bb

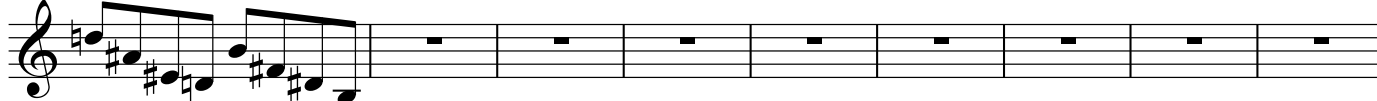
444 A E Db A F D Bb F E Db A E D Bb F D Db A E Db Bb F D Bb

B^omaj7

450 B D#F#B D F A#D D#F#B D# F A#D F F#B D#F# A#F F A#

453 B D#F#B B F#D# B A#F D A# F#D#B F# F D A#F D#B F#D#

456 D A#FDB F#D#B



The last hexatonic we are going to use a triad and impose the triad that is a half step above it. For example C and Db which is a half step above. This can be used over the altered chord.

C⁷alt.

C and C# triads over C altered

Db⁷alt.

Db and D triads over Db altered



478 D A G^bD Db A^bF Db

D and D[#] triads over D altered

D⁷alt.

482 D F[#]A D D[#]G A[#]D[#] F[#]A D F[#] G A[#]D[#] G A D F[#] A A[#]D[#]G A[#]

485 D F[#]A D D A F[#]D A[#]G D[#]A[#] A F[#]D A G D[#]A[#] G F[#]D A F[#]

488 D[#]A[#]G D[#] D A F[#]D

E^b7alt.

E^b and E triads over E^b altered

492 E^bG B^bE^bE A^bB E G B^bE^bG A^bB E A^b B^bE^bG B^bB E A^bB E^bG B^bE^bE^bB^bG E^b

496 B A^bE B B^bG E^b B^b A^bE B A^bG E^bB^bG E B A^bE E^bB^bG E^b

E⁷alt.

E and F triads over E altered

501 E G#BE F A BbF G#BE G#Ab F A B E G#B C F A C E G#B E E G#

505 #CA F C B G#EB A F CA G#EBG#F CA FE B G#E

F⁷alt.

F and F# triads over F altered

511 F A C F F#Bb C#F# A C F A Bb C#F#Bb C F A C C#F#Bb C#

514 F A C F F C A F C#BbF#C# C A F C BbF#C#BbA FCA F#C#BbF#FCA F

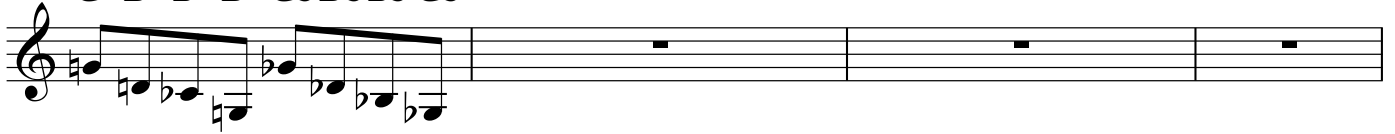
Gb⁷alt.

Gb and G triads over Gb altered

518 GbBb DbGb G B D G Bb DbGbBb B D G B DbGbBb DbD G B D

521 GbBbDb Gb GbDbBb Gb D B G D DbBbGbDb B G D B BbGbDbBb

524 G D B D GbDbBb Gb



G⁷alt.

G and G# triads over G altered

528 G B D G#C D#G#B D G B C D#G#C D G B D D#G#C D#G B D G G D B G



532 D#C G# D#D B G D C G#D# C B G D B G#D# C G#G D B G



A^b7alt.

A^b and A triads over A^b altered

536 A^bC E^bA^bA D^bE A C E^bA^bC D^bE A D^b E^bA^bC E^bE A D^bE A^bC E^bA^bA^bE^b A^b



540 E D^bA E E^bC A^bE^bD^bA E D^bC A^bE^bC A E D^bA A^bE C A^b



A⁷alt.

A and B^b triads over A altered

546 A C#E A A#D F A# C#E A C#D D A#D E A C#E F A#D F A C#E A A E C#A



550 F D A#F E C#A E D A#F D C#A E C# A#F D A#A E C#A



Bb7alt.

Bb and B triads over Bb altered

556 Bb D F Bb B Eb F#B D F Bb D Eb F#B Eb F Bb D F F#B Eb F# Bb D F Bb Bb F D Bb



560 F# Eb B F# F D Bb F Eb B F# Eb D Bb F D B F# Eb B Bb F D Bb



B7alt.

B and C triads over B altered

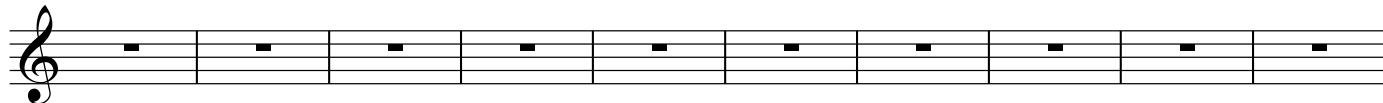
566 B D#F#BCE G C D#F#BD#EGCE F#BD#F#GCE G B D#F#BBF#D#B



570 G E C G F#D#BF#E C G E D#BF#D#CGE C B F#D#B



576



586

